



WELCOME TO PRAGUE!

IPR Prague

Judita Eisenberger

Urban Planner and Senior International Relations Specialist

OCTOBER 15, 2025

IPR
PRAHA



IPR Prague

01 OUR CITY

02 OUR PLANNING HISTORY

03 OUR MANDATE

04 OUR WORK



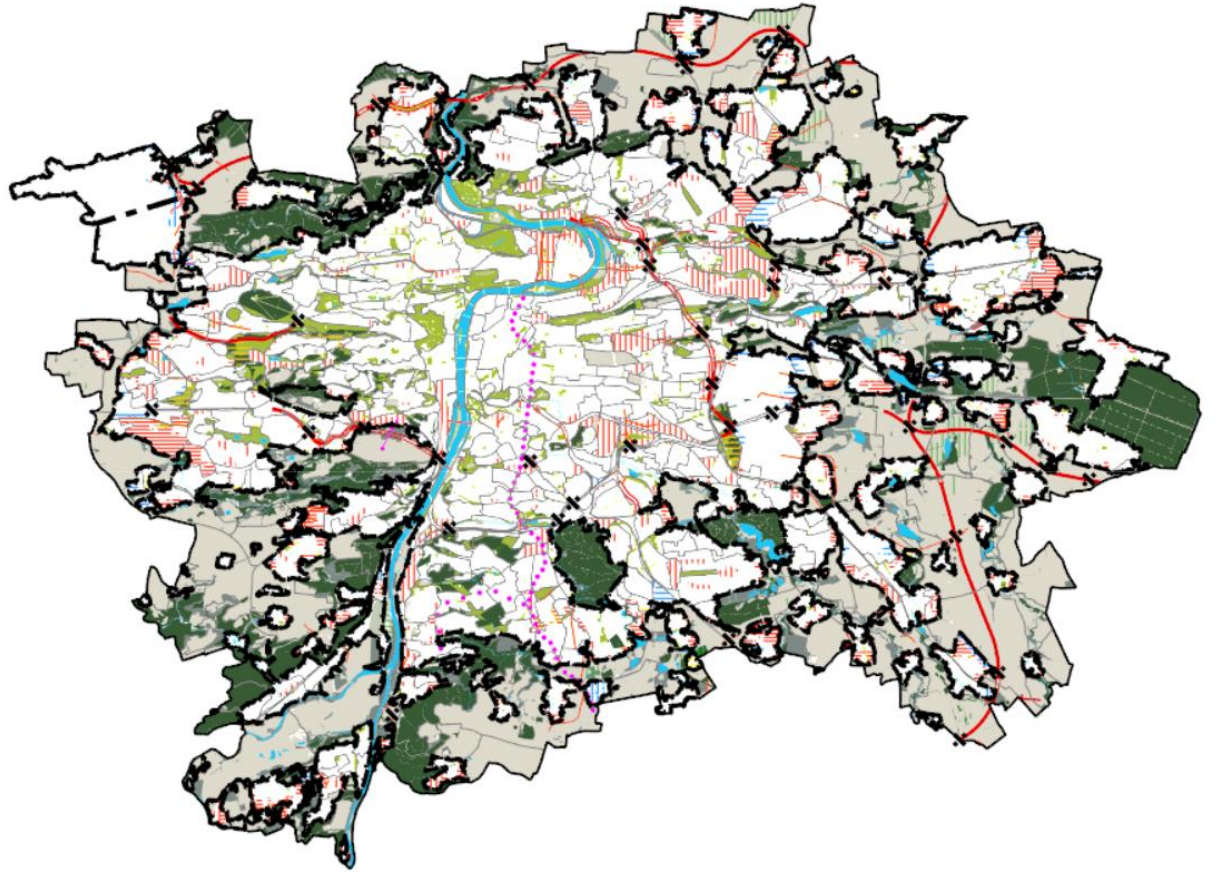
IPR
PRAHA

01

OUR CITY

Prague in Numbers

- Area: 496 km²
- Population: 1 397 880 (2024)
- Boroughs: 57
- Density: 2 818 people/km²*
- Tourism: 7.4 million visitors in 2023
6 million visitors in 2022
2.4 million visitors in 2021
2.2 million visitors in 2020
8 million visitors in 2019



*Kyiv = 3,299/km²

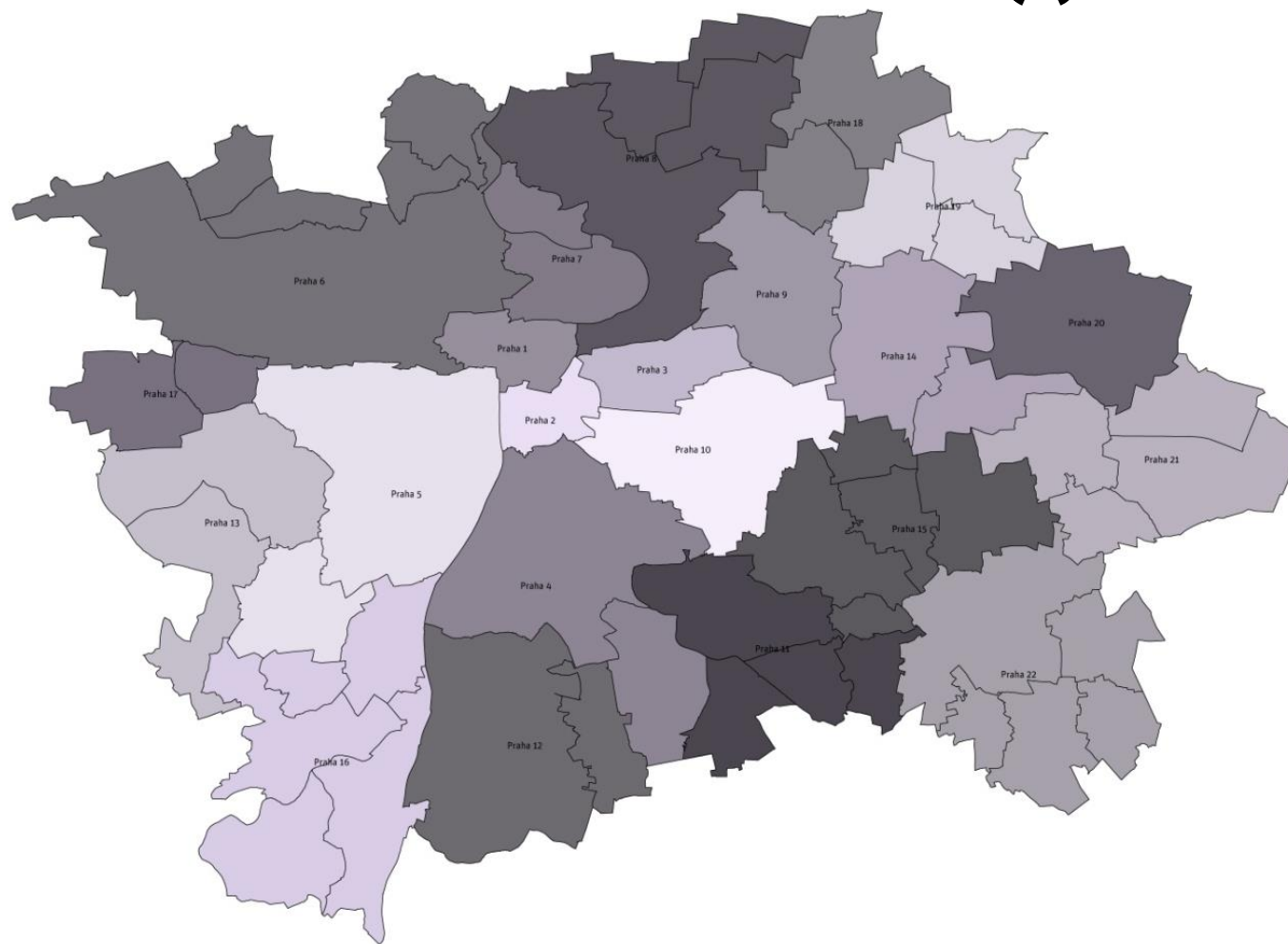
Paris = 20,000/km²

Brussels = 7,558/km²

Prague's 57 City Districts (!)



Prague's 22 Administrative Districts (!)



02

OUR PLANNING HISTORY

Our recent planning history

- 1945 Planning Commission for Prague
- 1951 Prague City Development Plan Office
- 1961 Office of the Chief Architect of Prague
- 1994 City Development Authority of Prague
- 2013 The Prague Institute of Planning and Development



03

OUR MANDATE

Our Mandate

- The Prague Institute of Planning and Development is the **body in charge of developing the concept behind the city's architecture, urbanism, development and formation.** It is an organization funded by the City of Prague and represents the city in spatial planning matters.
- We have a single basic objective – **to make Prague a living, influential, dynamic and competitive city** that provides pleasant conditions for living, flexibly reacts to the current needs of its population, and maintains its place among the most advanced cities in Europe.

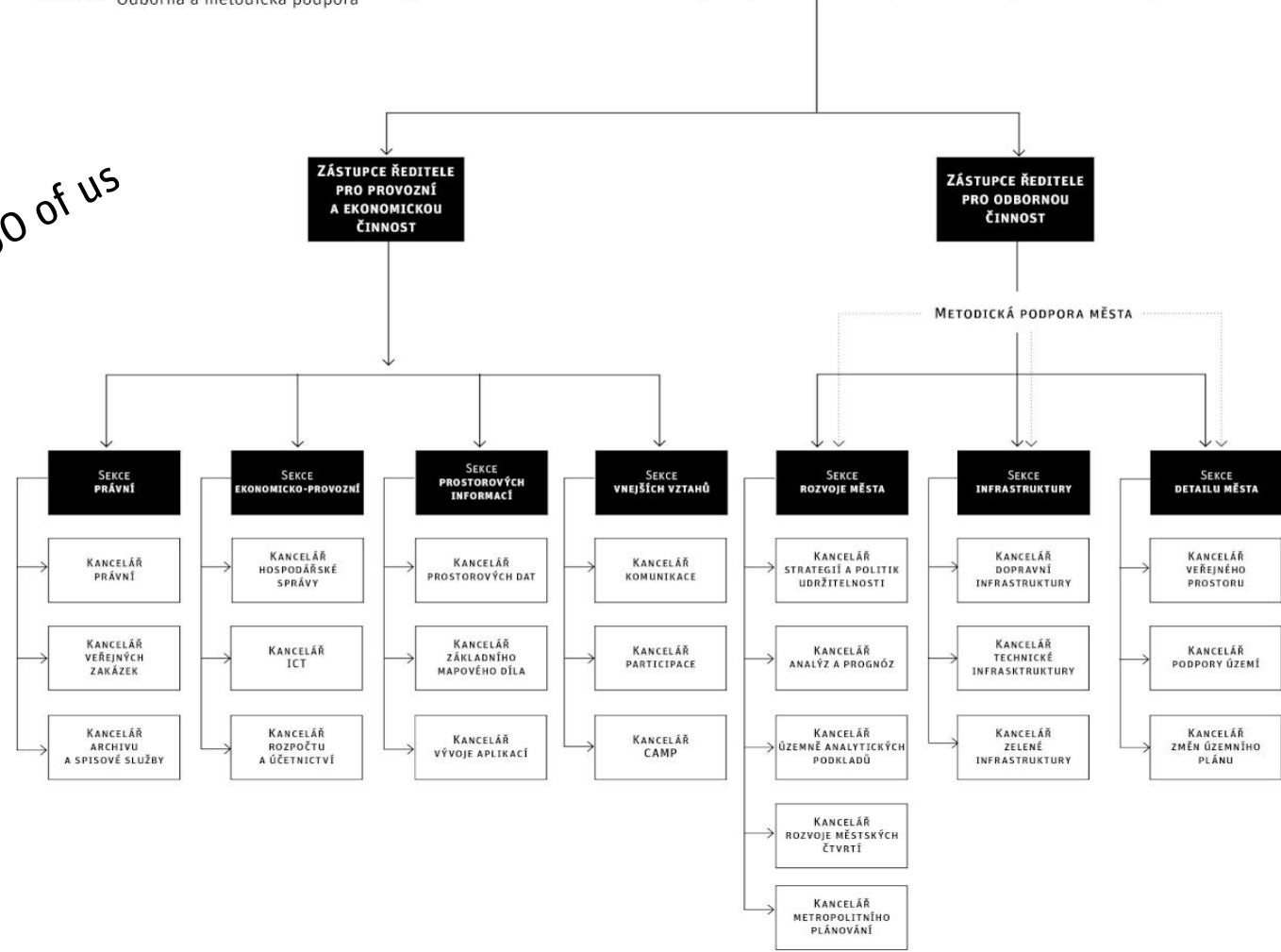
Organigram IPR Praha 2021

— Řídicí procesy

..... Odborná a metodická podpora



There are about 250 of us



04

OUR WORK

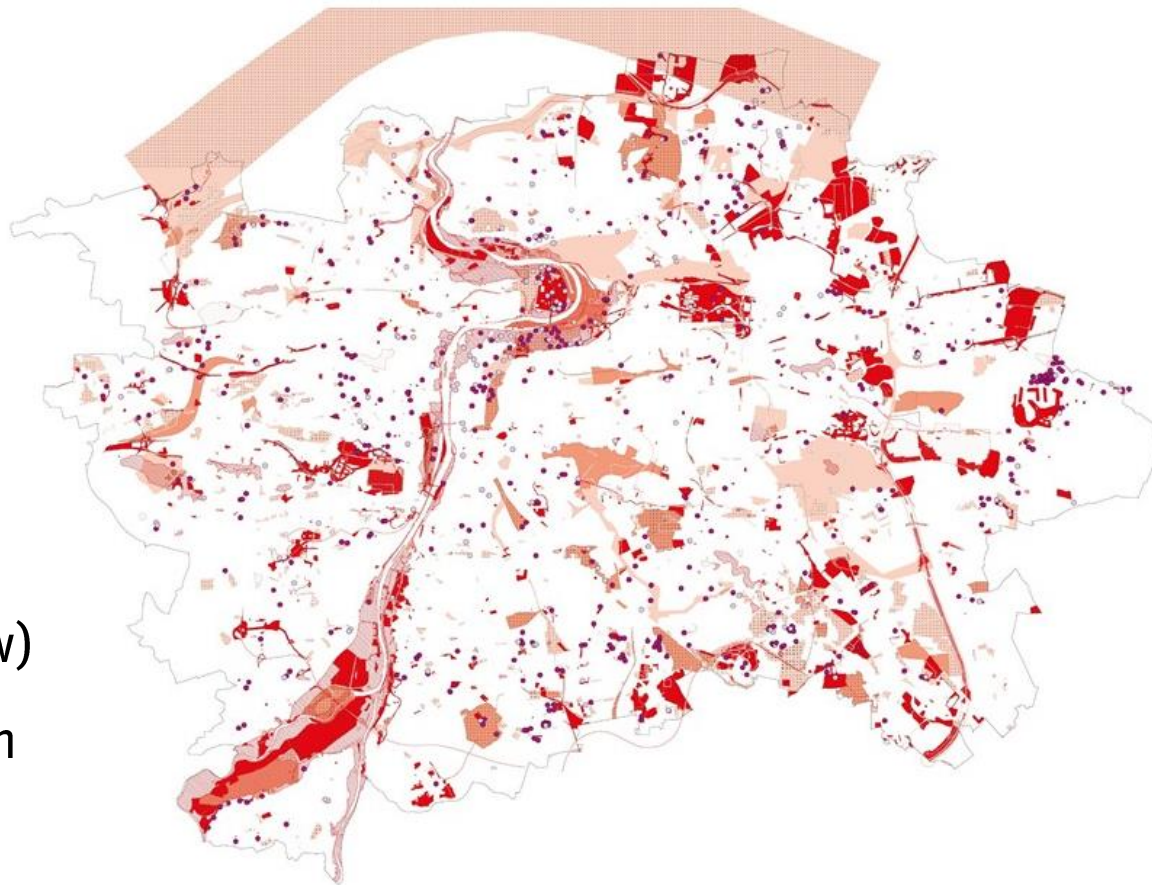
Current Land Use Plan for Prague

- This plan was approved in 1999 and is still in use today.
- The plan dictates allowable uses by parcel.



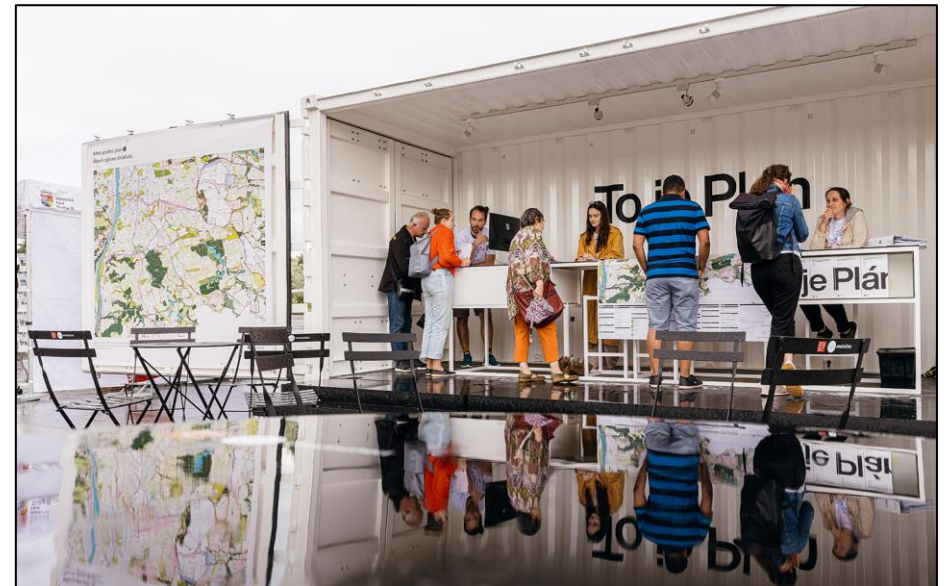
Changes to the Land Use Plan

- Amendments to the 1999 plan were constantly being requested and processed by IPR.
- Between 2000 and 2012, 2 060 changes were processed.
- \$\$\$
- This (and a statute in the country's planning law) necessitated the creation of a new land use plan for the city.

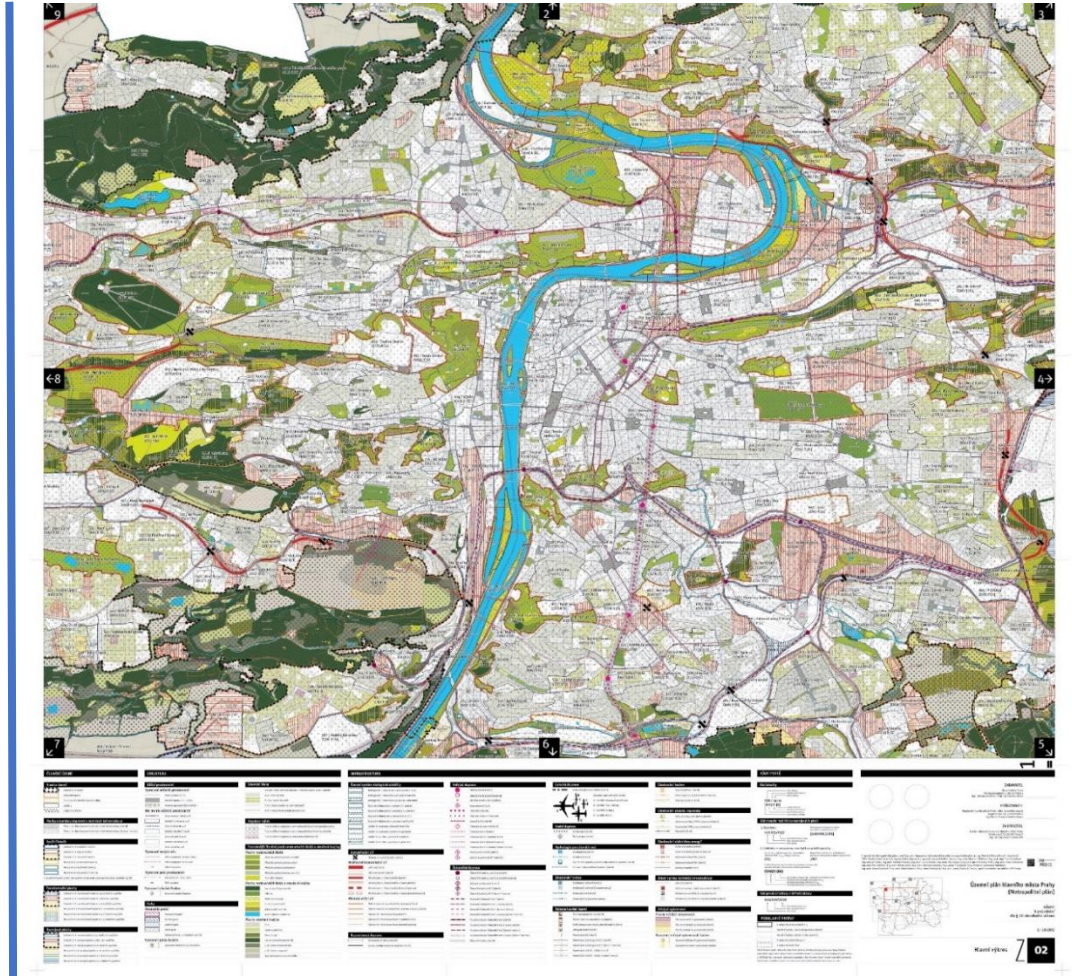
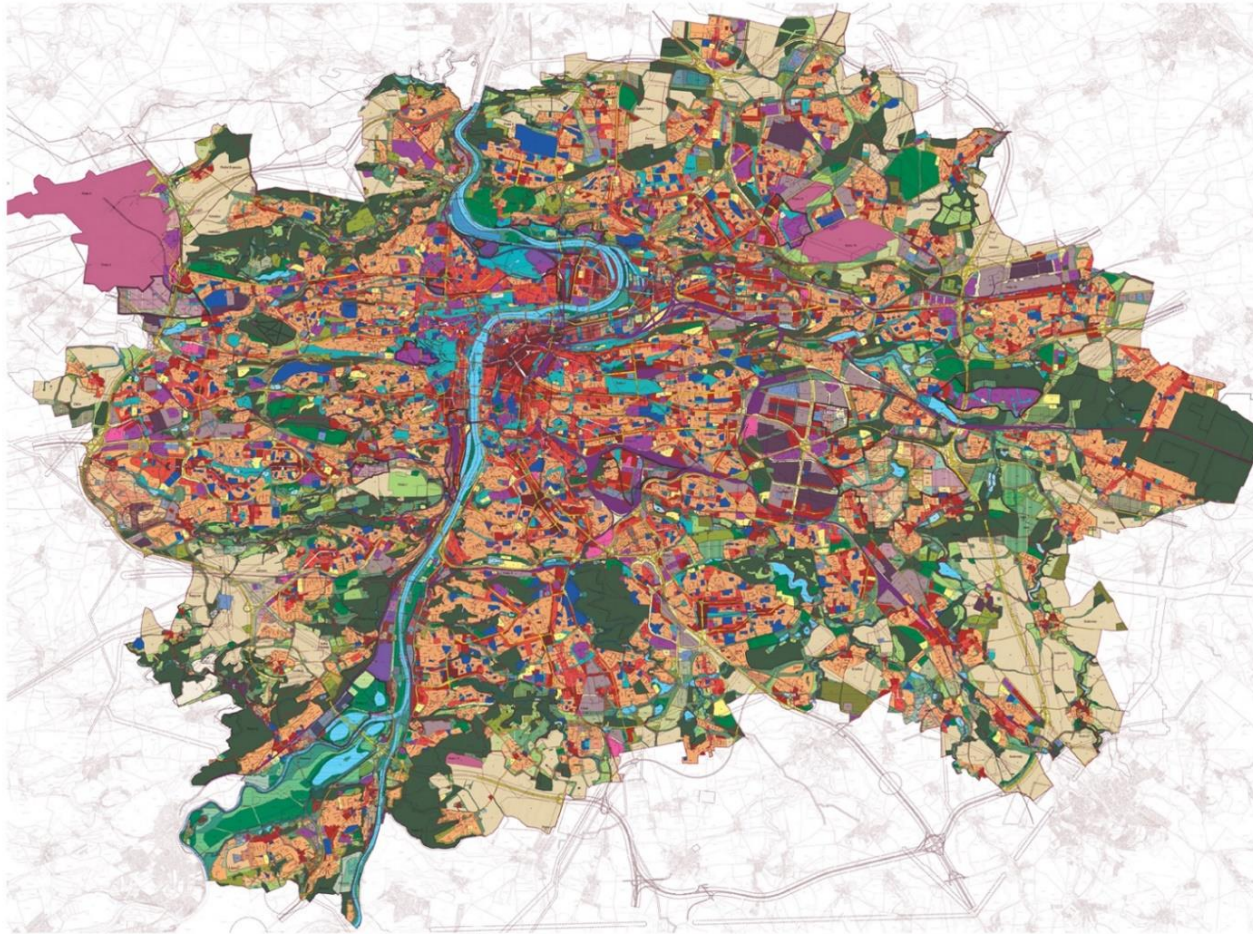


The Metropolitan Plan of Prague

- The Metropolitan Plan will replace the plan from 1999.
- The plan specifies the structure of the city rather than the uses of specific parcels.
- There is an ongoing public participation process.
- The plan is currently in the **final review process** and we hope it will be approved in 2026.

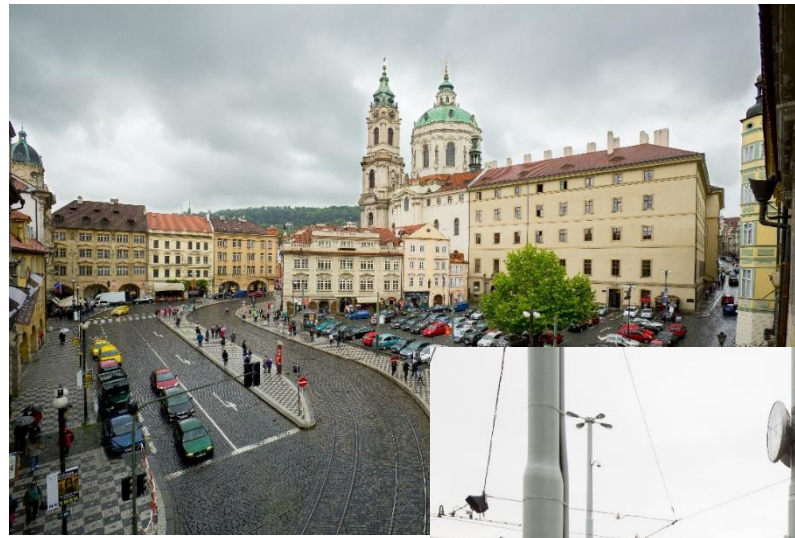


The 1999 Plan vs. the Metropolitan Plan



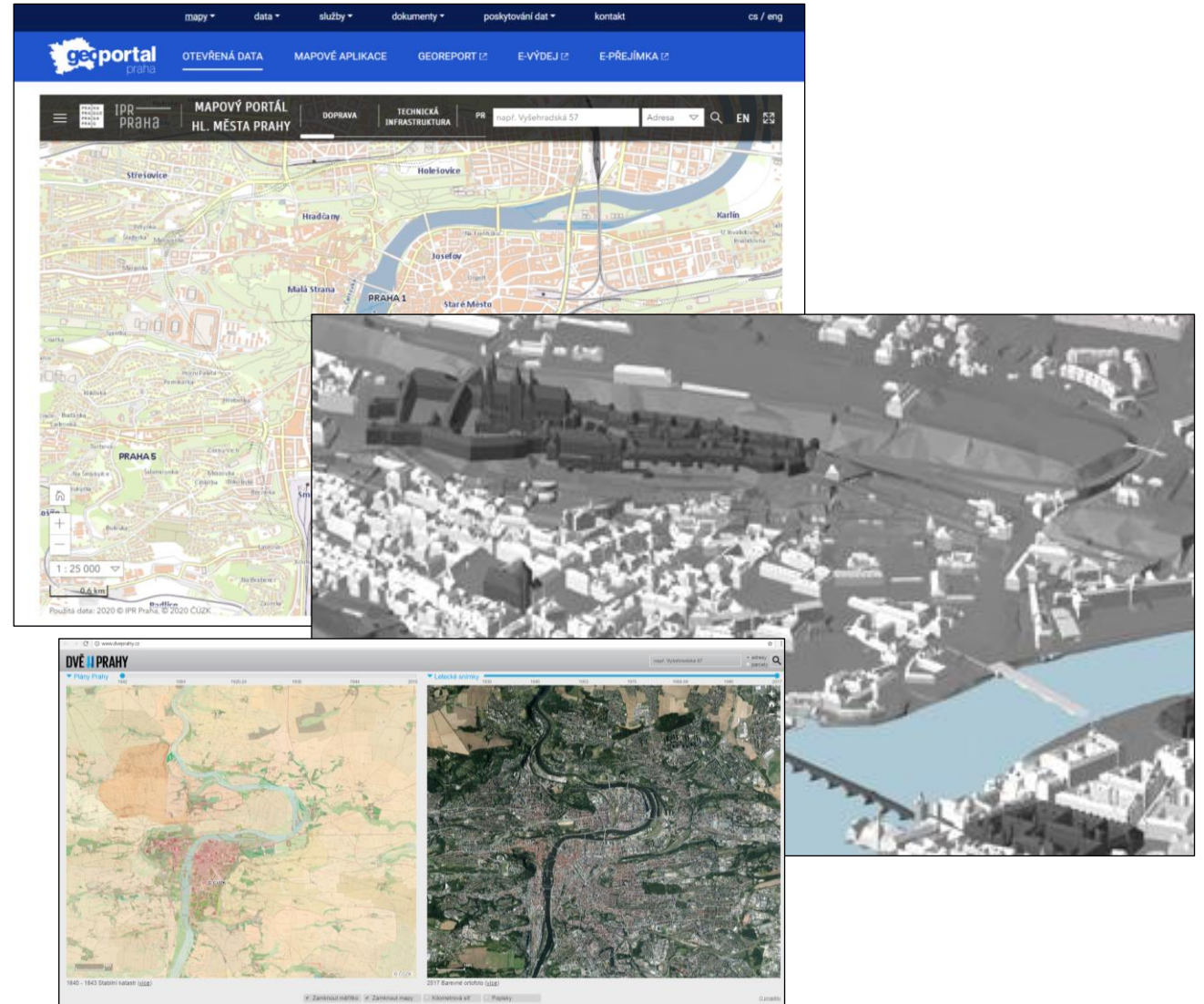
Public Space

- We created a Public Space Design Manual to help transform Prague into a pleasant city that draws people out into public space.
- We engage in a variety of public space improvements throughout the city.



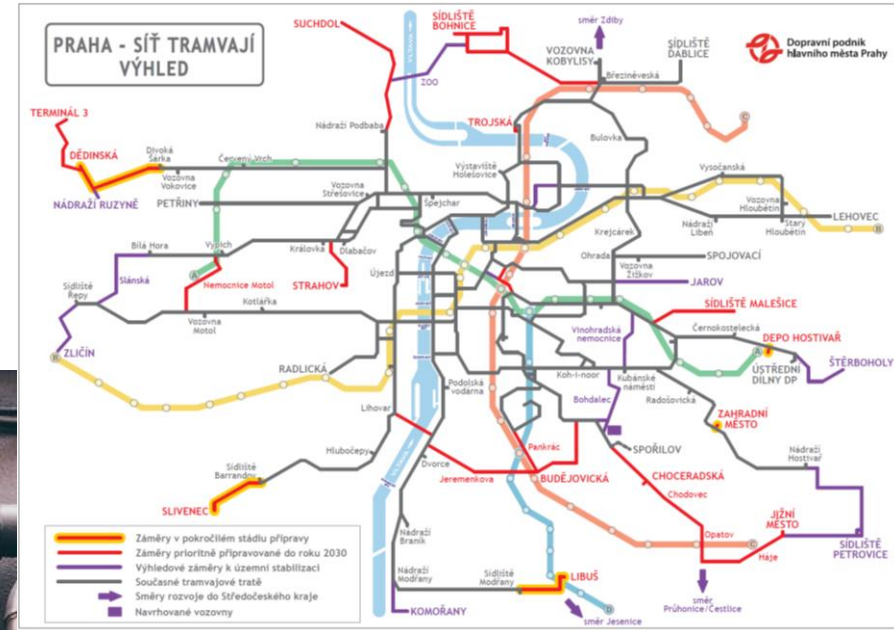
Geographical Data

- IPR administers the basic geographical data for all urban governance activities in the city.
- We maintain the geoportal with access to over 30 maps of Prague.
- We administer the 3D model of Prague and other applications like “Two Pragues”.



Transport and Technical Infrastructure

- We provide expert traffic and transport advisory services for the city and coordinate between other sections of IPR, city districts, and other city agencies.
- We deal with issues of water and electricity supply, sewage, flood protection, and other technical infrastructure.



Green Infrastructure

- We work on the development of blue-green infrastructure in the city.
- We also deal with the issues of climate adaptation, park and landscape management, air quality, waste management, and acoustics.

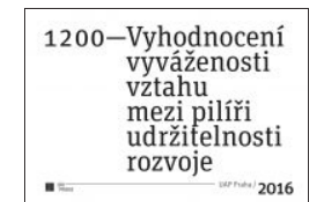
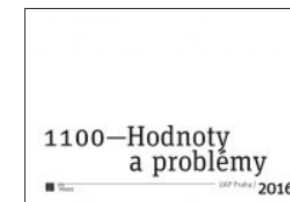


Strategic Planning and Analysis

- IPR Prague collects and compiles relevant data to create strategies, documents, and analyses, and to provide input into projects.
- Examples include:
 - Analyses of the city's housing stock
 - Analysis of Airbnb in Prague
 - Demographic and quality of life analyses
- IPR Prague is required to submit extensive documentation about the existing conditions of the city every four years; this covers geographical data as well as economic, social, cultural, and environmental considerations.

Spatial Analysis and Documentation

- IPR Prague is required to submit extensive documentation about the existing conditions of the city every four years.
- This is an actual description of the city, which enables it to track its own development and serves as an information source for the preparation of land use plans and other documentation.
- This documentation covers geographical data as well as economic, social, cultural, and environmental considerations.

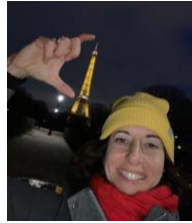


Participation

- IPR Prague created a Manual of Public Participation in 2016.
- We “participate” projects such as public realm improvements, street reconstructions, and the Metropolitan Plan.
- We conduct training for developers and city districts.
- We are currently training “participators” in city districts as part of a pilot project.



International Relations (me)

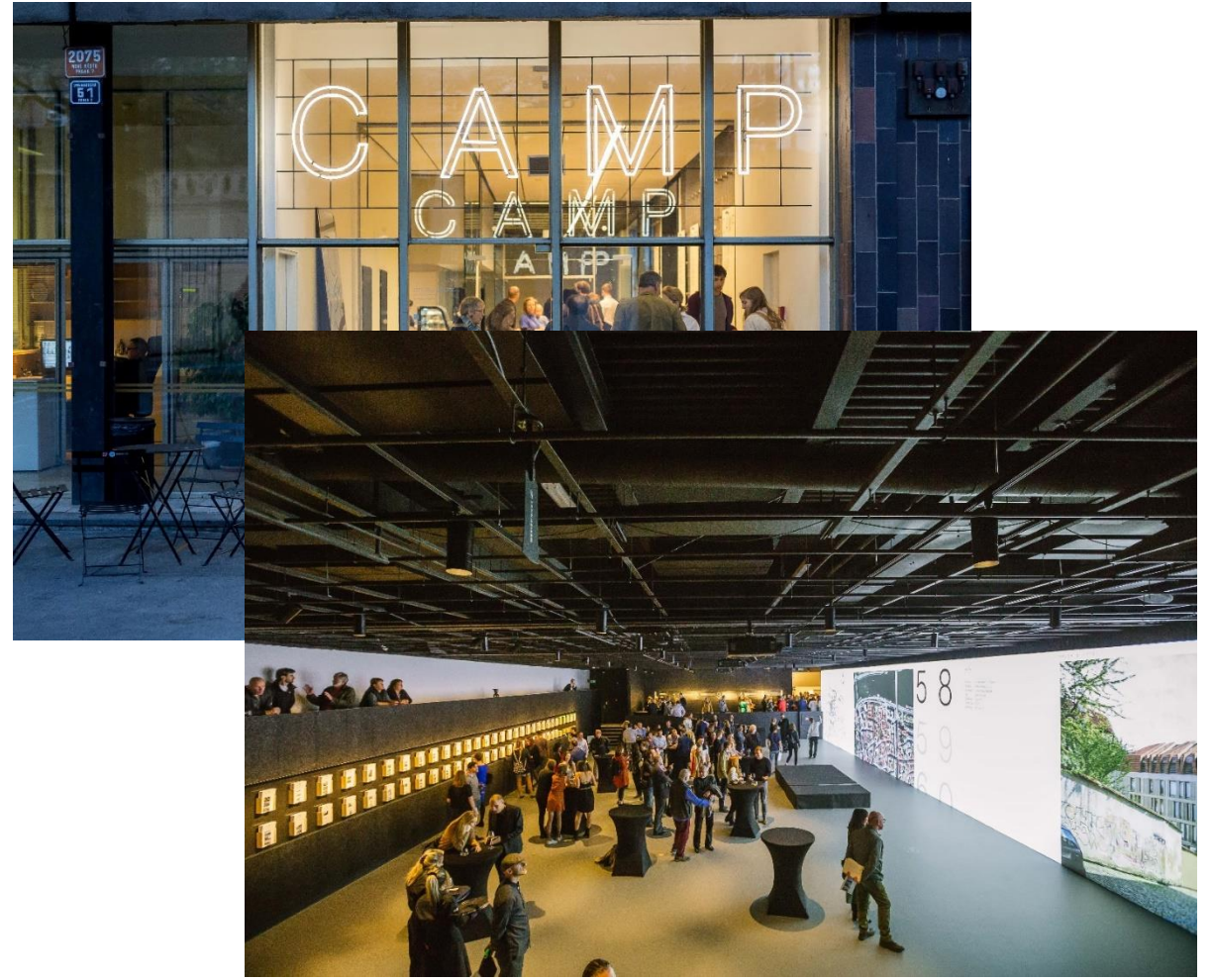


- We engage in international cooperation.
- We participate in studies and meetings with the OECD, ESPON, UNEP, UN Habitat, and others.
- We seek out and administer EU-funded projects.
- We are active members of the EUROCITIES network and various working groups.
- We administer IPR's [English website](#).
- We host a variety of delegations here in Prague.



Center for Architecture and Metropolitan Planning

- The goal of CAMP is to improve public discourse about development in Prague.
- CAMP has a rich program of public discussions, presentations, workshops, screenings, and other activities.
- Everything at CAMP is free!



Sneak preview: Vltavská Philharmonic Hall

- Brownfield regeneration.
- Infill.
- Housing.
- Neighborhood revitalization.



Sneak preview: Prague Main Train Station





ANY QUESTIONS?